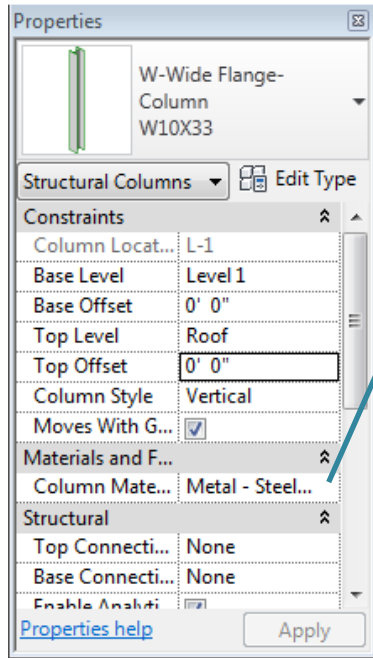


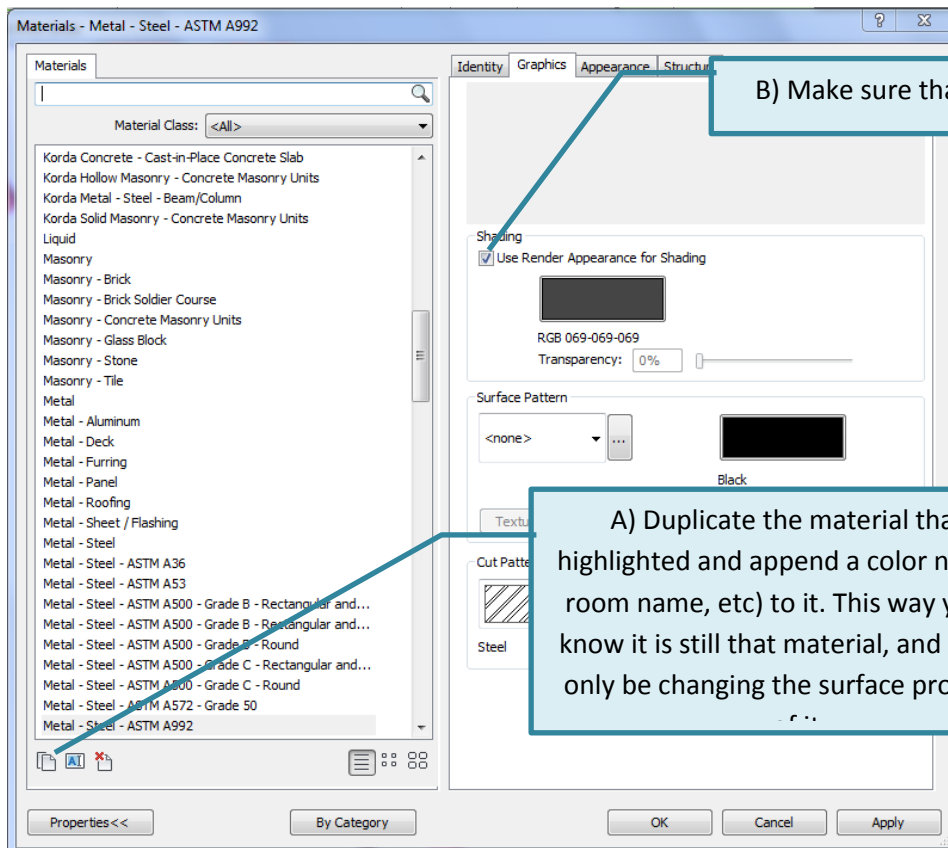
how to:

1. “Paint” Structural Steel Framing
- and
2. “Paint” Mechanical Ductwork

1. Painting Structural Steel Framing

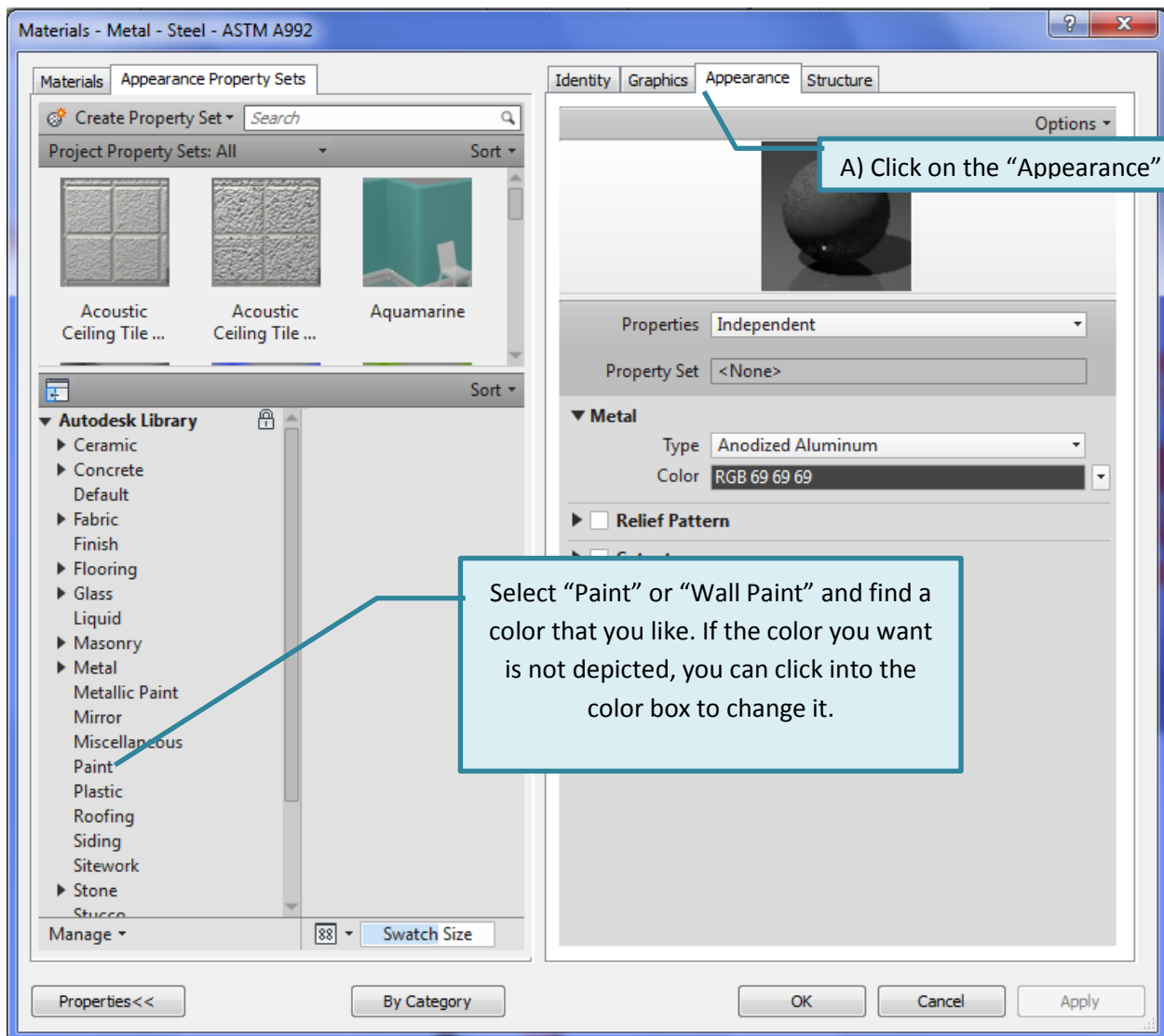


Select the member that you want to edit. Click “...” in under the “Materials and Finishes” subcategory of the Properties dialogue box. This will open the Materials dialogue box.

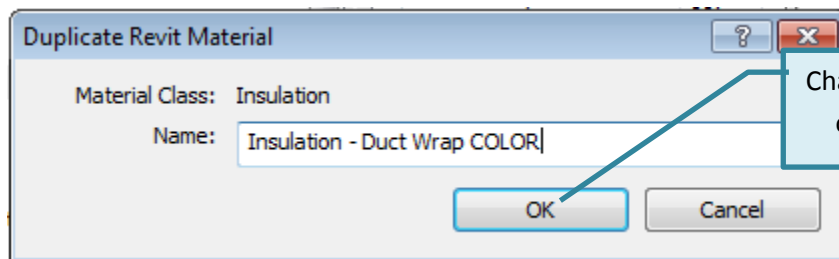
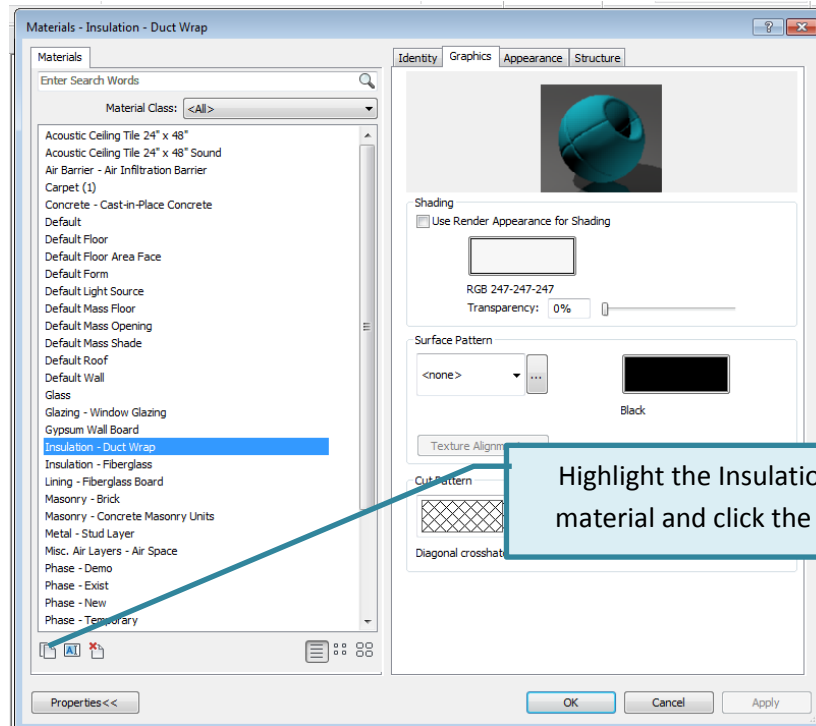
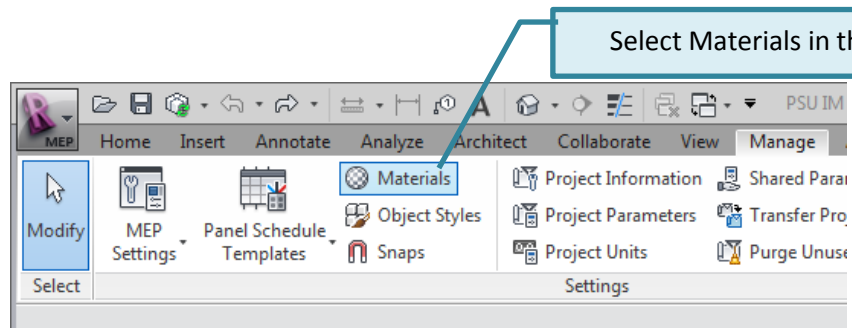


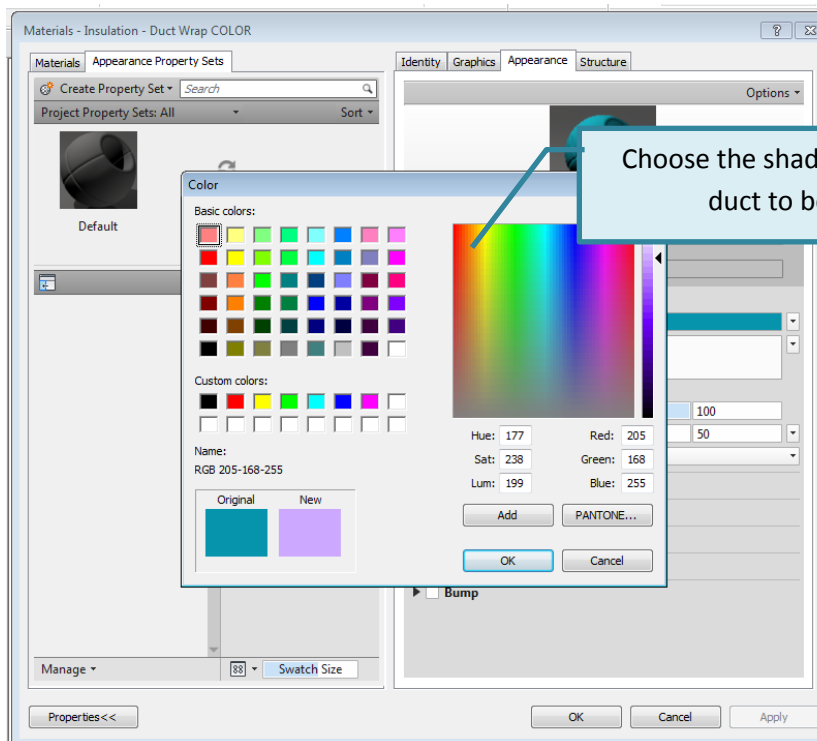
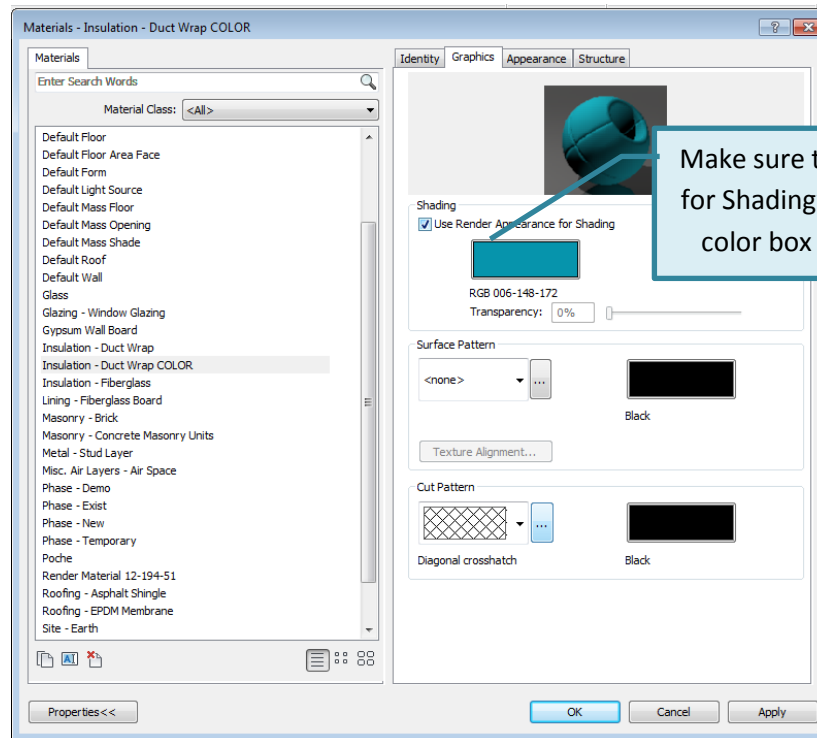
B) Make sure that this box is checked.

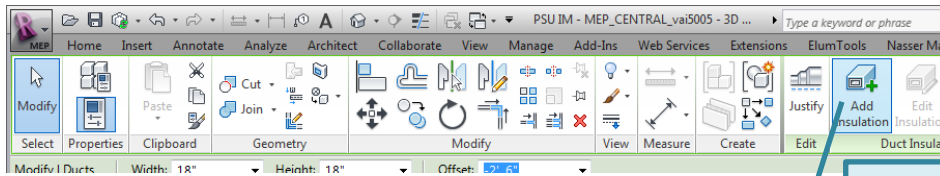
A) Duplicate the material that is highlighted and append a color name (or room name, etc) to it. This way you will know it is still that material, and you will only be changing the surface properties



2. Painting Mechanical Ductwork







Select the duct(s) that you would like to make the color that you chose in the step above. When it is selected, click Add Insulation

Add Duct Insulation

Insulation Type: **Duct Wrap** Edit Type

Thickness: **.1**

OK **Cancel**

Make the thickness very thin so that it will not interfere with collaboration. Then click Edit Type.

Type Properties

Family: **System Family: Duct Insulation** Load...

Type: **Duct Wrap** Duplicate... Rename...

Type Parameters

Parameter	Value
Materials and Finishes	
Material	Insulation - Duct Wrap
Identity Data	
Keynote	
Model	
Manufacturer	
Type Comments	
URL	
Description	
Assembly Description	
Assembly Code	
Type Mark	
Cost	
Workset	Duct Insulation
Edited by	vai5005
Overall Legend	
ID_Filter Code	

<< Preview **OK** **Cancel** **Apply**

Duplicate the Duct Wrap type so that it will not change all of the duct wrap in the project. Then click the "... " next to Material under Materials and Finishes.

